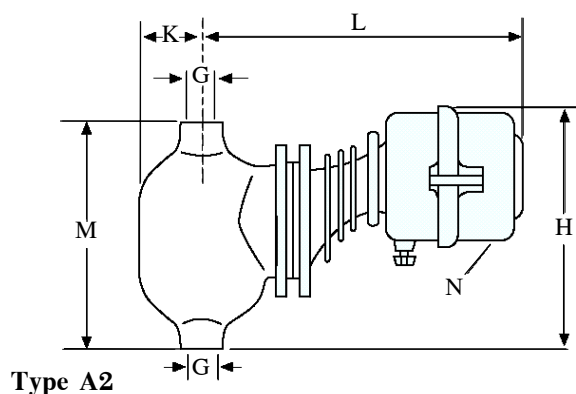
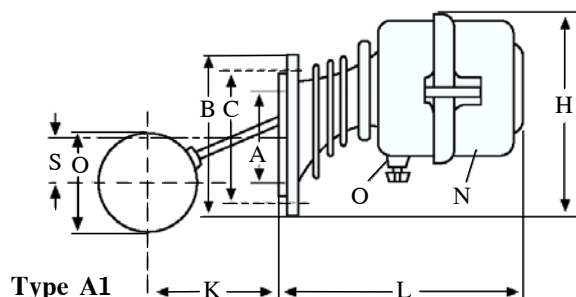


PN 16 Level Regulators (A-1 and A-2)

A-1 and A-2



		Type	
		A1	A2
A	mm	100/Æ	-
G	Connection	-	R 1"
B	mm	145	-
C	mm	125/Æ / 6 x 11.5/Æ	-
H	mm	210	245
K	mm	85	70
L	mm	220	300
M	mm		205
N	mm	160	160
O	mm	90	-
S	mm	5	-
Weight	kg	6	11

Main Features

A-1 and A-2 type level regulators are used to control and regulate the liquid level in boilers by means of 2 mercury switches which gives three mode of operation at different levels.

Operating principle

The rising or falling of liquid level moves the float slightly up or down which activates the mercury switches. These may be used to control a burner and a pump and warn the user by an alarm at the dangerous level.

Technical data

Float material	Stainless steel AISI 316
Rod material	Stainless steel AISI 316
Bellows material	Stainless steel AISI 316 L
Connection head	Aluminium injection
Pressure resistance	Max. 16 bar, 25 bar application available on request
Body	Cast iron. For max. 25 bar application stainless steel body available
Switching capacity	380 V, 3A 1.1 kW A.C 220 V, 1A 220 VA D.C
Control range	15-75 mm for A-1 15-30 mm for A-2
Installation	Lateral

Connection

A-1 may be connected to the tank or boiler using flanges where as A-2 is connected using a by-pass tube.

Guarantee

AYVAZ level regulators carry a guarantee against faulty workmanship and material. We reserve the right to change specifications without notice.

